

# WELCOME

We are glad you are here!

This card is designed for everyone who attends West Center Baptist. It is a way for us to know whom we are serving and how we are doing. Please fill out both sides where you feel appropriate and drop it in the offering plate or at the Welcome Center.

Name \_\_\_\_\_

People with you today:

Spouse \_\_\_\_\_

Child(ren) \_\_\_\_\_ Age \_\_\_\_\_

\_\_\_\_\_ Age \_\_\_\_\_

\_\_\_\_\_ Age \_\_\_\_\_

Guests \_\_\_\_\_

Address \_\_\_\_\_

City \_\_\_\_\_ St. \_\_\_\_\_

Zip \_\_\_\_\_

Phone \_\_\_\_\_

Cell \_\_\_\_\_

E-mail \_\_\_\_\_

Check if information above has changed.

WCB Member  Regular Attendee

1st Visit  Return Visitor

Age: 12-17 18-24 25-35 36-55 56+

Single  Married  Widowed

I would like information on:

Baptism  Membership

Child Dedication  Bible Studies

A B C D E F G H I J K L M

N O P Q R S T U V W X Y Z

Place in Offering

February 6, 2011

## † · JOIN US IN PRAYER · †

- Benjamin McGuire 3rd degree burns on 44% of his body. Pray for his recovery and for his family, Brita, Matt & Thomas.
- Jody Graham and family in the passing of her father, Terry Bickett.
- For Jim Schrepel's sister Joyce Merrill, complications following surgery.
- Ella Peterreins in the hospital with undiagnosed health concerns.
- Brooke Wright seeing rheumatologist for joint pain, fever.
- Families with young ones hurting.

## OUTREACH TEAM

It is the mission of the Outreach Team to help lead, equip and train the body to reach the unsaved. Finding ways within the community where people's lives can be touched by the love of Christ. We sponsor and organize several events designed to connect our community with Christ.

**Contact the WCB office to learn more or join this team. Ministry Teams meet monthly.**

## WEST CENTER BAPTIST CHURCH

322 West Center St. - Madison, SD 57042 - (605) 256-3027 - www.westcenterbaptist.com

Wayne Ayer, Lead Pastor

wayne.a@westcenterbaptist.com

Kyle Osborne, Youth Pastor

kyle.o@westcenterbaptist.com

Mary Hofman, Office Manager

mary.h@westcenterbaptist.com

Brandize Nelson, Media Assistant

brandize.n@westcenterbaptist.com

SERVICES AVAILABLE ON TELEVISION  
7:00pm Thursday on Knology (Ch. 11)  
10:00am Sunday on Midcontinent (Ch. 20)  
10:00am Sunday on Knology (Ch. 11)

AND AUDIO SERMONS ONLINE

OFFICE HOURS M - TH: 8:00AM - 3:00PM

STAFF MEETINGS: TUESDAYS 9 - 10:30AM

## READ THROUGH THE BIBLE THIS YEAR

### Whole Bible Plan

- Feb 6: Lev 16-18
- Feb 7: Lev 19-21
- Feb 8: Lev 22-23
- Feb 9: Lev 24-25
- Feb 10: Lev 26-27
- Feb 11: Num 1-2
- Feb 12: Num 3-4

### New Testament Plan

- Feb. 7: Matt. 26
- Feb. 8: Matt. 27
- Feb. 9: Matt. 28
- Feb. 10: Mark 1
- Feb. 11: Mark 2

Lists available at  
www.westcenterbaptist.com

## CHILDRENS CHURCH

February 6, 2011

Jesus Teaches:

Salt & Light

Matthew 5:13-16

January 30, 2011:

Attendance: 256

General Fund: \$ 5,614.88

# IMPACT TODAY

February 6, 2011



## FRIENDS



## RELATIVES



## ASSOCIATES



## NEIGHBORS

# FRANTASTIC FEBRUARY



WEST CENTER BAPTIST CHURCH

# WEST CENTER EVENTS

## SUNDAY, FEBRUARY 6

8:30am Worship Service . . . . . WCB Sanctuary  
 9:45am Sunday School  
 11:00am Worship Service . . . . . WCB Sanctuary  
 12:15pm Souper Bowl Dinner . . . . . WCB Fellowship Hall  
 5:00pm Study of 1 Samuel (Adult) . . . . . WCB Fellowship Hall

## TUESDAY, FEBRUARY 8

9:30am For Women Only . . . . . WCB Chat Café  
 5:30pm Prayer Quilt . . . . . Schrepel's Home

## WEDNESDAY, FEBRUARY 9

11:00am Skeleton Crew . . . . . WCB Chat Café  
 12:00pm Study of Proverbs (Men) . . . . . DQ Basement  
 12:00pm Becoming More (Women) . . . . . Chamber Depot  
 5:15pm It's No Secret (Women) . . . . . Mochavino  
 6:00pm Ignite: MS Youth . . . . . Heaven's Castle  
 6:15pm AWANA . . . . . WCB various rooms  
 7:30pm Powercells: HS Youth . . . . . Heaven's Castle

## THURSDAY, FEBRUARY 10

7:00pm Worship Practice . . . . . WCB Sanctuary

## SOUPER BOWL SOUP DINNER

TODAY, February 6 at 12:15pm. Join us in supporting the youth with your free will offering. Enjoy a great bowl or two of soup! Proceeds go to the youth's Dare 2 Share evangelism trip in Lincoln February 25-26.

## FEBRUARY MINISTRY TEAMS

Please communicate with your team and meet on your own. Reports are due to the office Monday, February 14 by 10:00am.

## SKELETON CREW

**E**

Wednesday, January 12 at 11:00am

Anyone who loves to write notes and has some free time come join in the fun of encouraging others. Bring your lunch.

Q.) Who killed a lion in the snow?

## NAB MISSIONARY OF THE WEEK

Walter and Florence Grob, Missionaries to Cameroon



Walter is Treasurer/Comptroller in the Central Accounting Office of the Cameroon Baptist Convention in Bamenda. Florence is a dentist in private practice and serves as choir director and member of the singing group "Psalms Alive." Pray for Walter's work with the Cameroonian brethren and fellow missionaries to strive for integrity in financial transactions and to help provide good accounting of ministry funds. Pray for God's encouragement to the handful of Cameroon Baptist Convention pastors striving to plant churches in the less reached northern part of Cameroon. Pray for Walter and Florence as they share the Gospel with others.

## LEADERS 4 SUNDAY SCHOOL

**A**

Leaders are needed for teaching adult Sunday School classes for March - May. If you are interested, please select A on the tear off tab.

## CHILDREN'S CHURCH

**C**

Teacher needed for 4th Sunday of the month. Children's Church is for 2yr - Kindergarten, held during the 11:00am message. Easy to follow curriculum provided. Once a month commitment.

## VBS DIRECTOR

**V**

VBS 2011 is in need of a Director. Please join us in prayer for this yearly children's outreach. Many volunteers are needed and we have to start with the director. Interested directing or co-directing please circle V on your tear off tab.

## NEW WOMEN'S CLASS

• **Becoming More than a Good Bible Study Girl** by Lysa TerKeurst  
 Forge a deeper connection with God! **Location: Chamber Depot**  
**Starting February 2, Wednesdays from 12:00pm to 1:00pm**

## FAMILY INFORMATION BOARD

Check out community events and family announcements in the coat hall east of the sanctuary.

(A.) | Chronicles 11:23

## PLEASE SHARE WITH US.

- I would like to speak with a pastor.
- Today I prayed to receive Christ.

### Comments

---



---



---



---

### Prayer Requests & Answers

---



---



---



---



---



---

### How can we better help you?

---



---



---

### WCB Prayer Chain

Add my email  yes  no

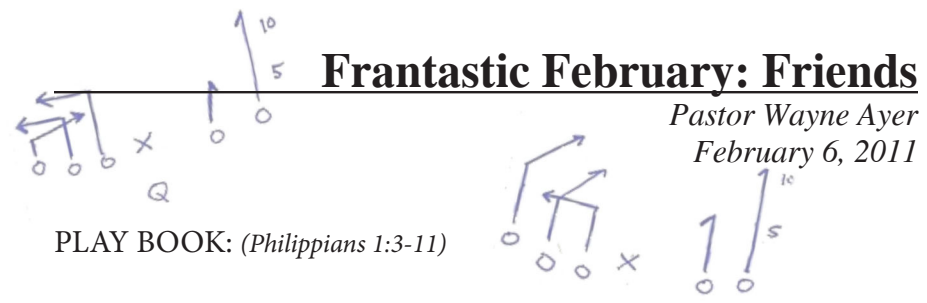
email \_\_\_\_\_

---

West Center Baptist

322 W. Center St., Madison, SD 57042

Place in Offering



# Frantastic February: Friends

Pastor Wayne Ayer  
February 6, 2011

PLAY BOOK: (Philippians 1:3-11)

Observation#1 Looks for the \_\_\_\_\_ in people. (Vs. 3)

Observation #2 \_\_\_\_\_ people's \_\_\_\_\_ and help. (Vs. 5)

Observation #3 \_\_\_\_\_ positive \_\_\_\_\_. (Vs. 4)

1. Pray that they will \_\_\_\_\_ in love.  
“... abound in love ...” means to overflow, like a tidal wave.

2. Pray that they make \_\_\_\_\_ in life.  
“... discern what is best...”

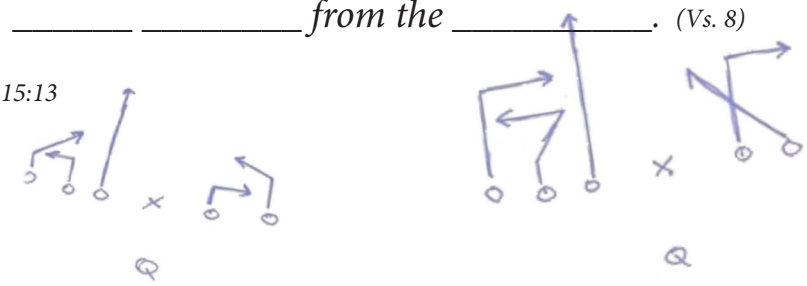
3. Pray that they will do the \_\_\_\_\_.  
“... be pure and blameless...” and have a clear conscious.

4. Pray that they will live for \_\_\_\_\_.  
“... the fruit of righteousness.”

Observation #4 Be \_\_\_\_\_ with \_\_\_\_\_. (Vs. 6)

So here the secret to lasting friendships:  
\_\_\_\_\_ from the \_\_\_\_\_. (Vs. 8)

John 15:13



# COMMUNION & BABY DEDICATION

Next Sunday, February 13 (Relative Sunday)

## CARI LOGAN & FELLOWSHIP MEAL

Cari will be here to share on February 13. Join us at 12:15pm for a fellowship meal, bring a dish to share. Cari's birthday is February 11 so let's have some great birthday desserts! :) Please pray for Cari as she prepares and travels home from Sierra Leone. Terry & Karen Logan will be traveling with her when she returns to Africa.

## COLLECTING ITEMS FOR SIERRA LEONE

The WCB Missions Team is encouraging you to join in collecting items for Cari to take back to the kids at the orphanage (ages 2 months to 18 years).

**Needed items:** school supplies, art/craft supplies, pencils, medical supplies (band-aids, instant ice packs, children's vitamins, etc. ), reading glasses (for staff), calculators (scientific and simple), NOTHING LARGE OR HEAVY (EX: TEXTBOOKS)

## BAPTISM & MEMBERSHIP

RSVP by February 22

We will be offering a 101 Membership class for **adults** interested in baptism or membership on **February 27 at 12:15pm**, meal provided. **N**

For **children/youth** interested will be offering a special age appropriate 101 Membership class on **February 26 at 10:00am**. **P**

**Baptisms** will be held during either service on **Sunday, March 6**.

## NEW ADULT STUDY

### • Couples of the Old Testament

In the Old Testament there are arranged marriages, fiercely loving marriages, enduring marriages, an instant marriage, a coerced marriage and a perfect marriage--until the couple blew it! This study will dig deeper into these relationships highlighted in the Bible to learn important lessons about marriage, God and yourself.

**Location:** Jim & Joyce Schrepel's home

**Starting Sunday, February 27 at 6:30pm ( 2nd & 4th Sundays)**